

YGE 60 CELL SERIES

YL270P-29b
YL265P-29b
YL260P-29b
YL255P-29b
YL250P-29b



QUALITY MEETS VERSATILITY IN OUR FLAGSHIP MODULE

From residential and commercial rooftops to ground-mounted solar farms, the YGE 60 Cell Series, our most popular product line, is trusted by hundreds of thousands of project owners worldwide.

16.6%

MAXIMUM EFFICIENCY

25 YEAR

LINEAR POWER WARRANTY

0 / +3%

POWER TOLERANCE



Long-Term Durability

Independent tests validate Yingli modules' resistance to adverse environmental factors such as salt mist, ammonia, and blowing sand.



More Energy per Watt

From hot climates to low-light conditions, Yingli modules deliver superior energy yield in a wide range of temperatures and irradiances.



Global Scale

As one of the world's largest solar module manufacturers, Yingli has deployed over 14 GW of solar modules worldwide and supplied nearly 100,000 projects in the Americas.



Local Support

Yingli's dedicated local team provides comprehensive customer service through regional headquarters in New York and San Francisco.

Warranty Information

Ten-year limited product warranty. Industry leading 25-year performance warranty adds value by guaranteeing power output on an annual basis, in compliance with our warranty terms and conditions.

Performance Modeling

For those interested in obtaining performance modeling files for system energy yield simulation, please contact Yingli at simulation@yingliamericas.com.

Qualifications & Certificates

CEC, FSEC, ISO 9001:2008, ISO 14001:2004, BS OHSAS 18001:2007, SA8000, UL 1703

ELECTRICAL PERFORMANCE

Electrical parameters at Standard Test Conditions (STC)

Module type			YL270P-29b	YL265P-29b	YL260P-29b	YL255P-29b	YL250P-29b
Power output	P_{max}	W	270	265	260	255	250
Power output tolerances	ΔP_{max}	%			0 / +3		
Module efficiency	η_m	%	16.6	16.3	16.0	15.7	15.4
Voltage at P_{max}	V_{mpp}	V	30.7	30.5	30.3	30.0	29.8
Current at P_{max}	I_{mpp}	A	8.80	8.70	8.59	8.49	8.39
Open-circuit voltage	V_{oc}	V	37.9	37.8	37.7	37.7	37.6
Short-circuit current	I_{sc}	A	9.27	9.18	9.09	9.01	8.92

STC: 1000W/m² irradiance, 25°C cell temperature, AM 1.5G spectrum according to EN 60904-3.

Electrical parameters at Nominal Operating Cell Temperature (NOCT)

Power output	P_{max}	W	196.9	193.3	189.7	186.0	182.4
Voltage at P_{max}	V_{mpp}	V	28.0	27.8	27.6	27.4	27.2
Current at P_{max}	I_{mpp}	A	7.04	6.96	6.87	6.79	6.71
Open-circuit voltage	V_{oc}	V	35.0	34.9	34.8	34.8	34.7
Short-circuit current	I_{sc}	A	7.49	7.42	7.35	7.28	7.21

NOCT: open-circuit module operation temperature at 800W/m² irradiance, 20°C ambient temperature, 1m/s wind speed.

THERMAL CHARACTERISTICS

Temperature coefficient of P_{max}	%/°C	-0.42
Temperature coefficient of V_{oc}	%/°C	-0.32
Temperature coefficient of I_{sc}	%/°C	0.05

OPERATING CONDITIONS

Max. system voltage	1000V _{DC}
Max. series fuse rating	15A
Limiting reverse current	15A
Operating temperature range	-40 to 185°F (-40 to 85°C)
Max. hailstone impact (diameter / velocity)	25mm / 23m/s

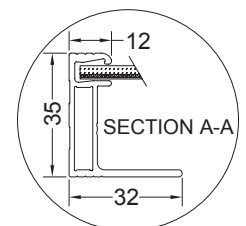
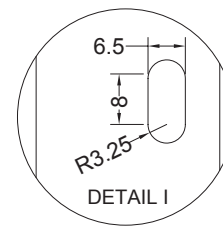
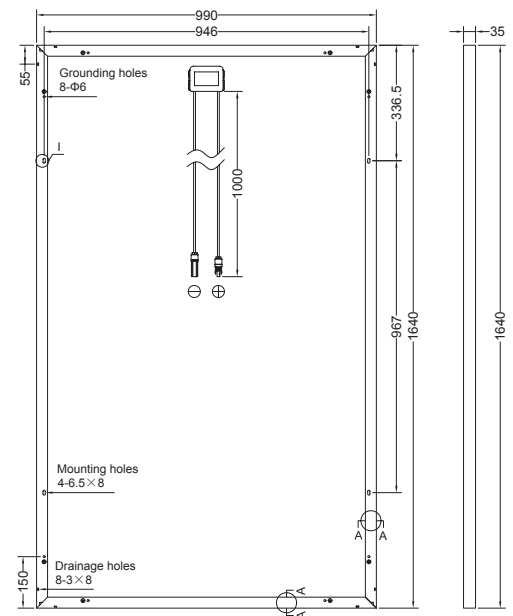
CONSTRUCTION MATERIALS

Front cover (material / thickness)	low-iron tempered glass / 3.2mm
Cell (quantity / material / dimensions / number of busbars)	60 / multicrystalline silicon / 156mm x 156mm / 3 or 4
Encapsulant (material)	ethylene vinyl acetate (EVA)
Frame (material / color)	anodized aluminum / silver or black
Junction box (ingress protection rating)	≥ IP65
Cable (length / cross-sectional area)	1000mm / 4mm ²
Connector (type / ingress protection rating)	MC4 / IP67 or Amphenol H4 / IP68

GENERAL CHARACTERISTICS

Module dimensions (L / W / H)	64.57in (1640mm) / 38.98in (990mm) / 1.38in (35mm)
Module weight	40.8lbs (18.5kg)
Number of modules per pallet	30
Number of pallets per 40' container	28
Packaging box dimensions (L / W / H)	67in (1700mm) / 45in (1135mm) / 46in (1165mm)
Packaging box weight	1296lbs (588kg)
Fire classification type	Type 1 and Type 2

Units: inch (mm)



Warning: Read the Installation and User Manual in its entirety before handling, installing, and operating Yingli modules.

Yingli Green Energy Americas, Inc.

info@yingliamericas.com

Tel: +1 (888) 686-8820

YINGLISOLAR.COM | NYSE:YGE

© Yingli Green Energy Holding Co. Ltd. | YGE60CellSeries_US_201602_V02

Yingli, Yingli Solar and the Yingli Logo are trademarks/registered trademarks of Yingli Energy (China) Company Ltd. Corp./its affiliated companies in the U.S. and elsewhere. All rights reserved. The specifications in this datasheet are not guaranteed and are subject to change without prior notice.

